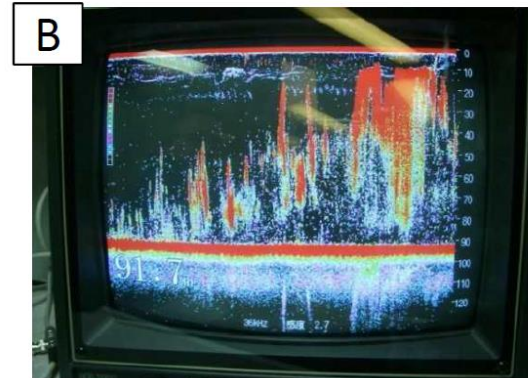




NOT ENOUGH HOME



GEOPHYSICAL-GEOLOGICAL SURVEY IN EASTERN ARCTIC, 2008-2009
RV «Akademik M.A. Lavrentyev» (Cruises 45&48). SEVMORGEO-POI FEB RAS



A: Ice floe at present too small often for the walrus (2009).

Ice cover in the Eastern Arctic decreasing,
sometimes ice floes too small for herds of walrus.
Walrus lose weight because of melting ice.

B: Methane bubble flares in the Chukchi Sea (2008).

Methane plumes in the Arctic found more and more every year.

C: The white bear and her cubs are tired of looking for an ice floe (2008).

D: Killer whales, likely, have more chance now (2008).

Climate change cause threats of polar fauna balance.



by Renat B. Shakirov, POI FEB RAS